

Instructions for Upgrading the Firmware of the Controller on a JEFFCO WD02 Wet Disintegrator.

1. The Firmware Upgrade Kit consists of two (2) parts – the replacement ROM integrated circuit (IC) and a tool to assist removal of the old IC from its socket (IC Remover). The IC is contained in a special bag to prevent damage from static electricity. DO NOT OPEN THE PLASTIC BAG YET!

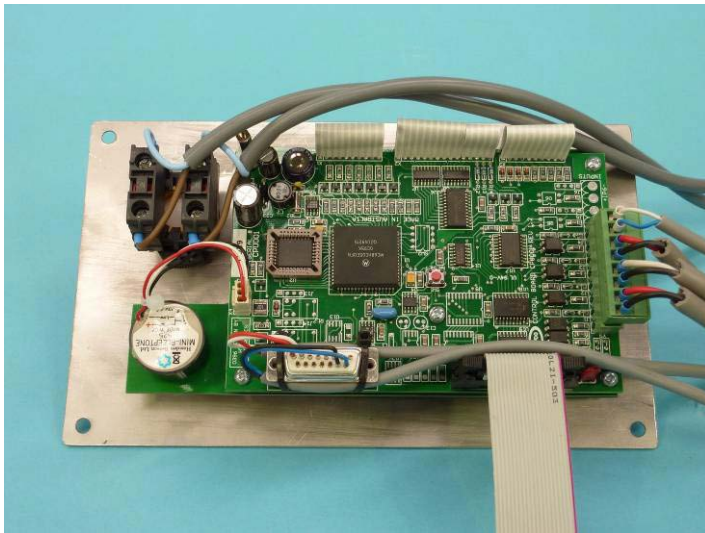


The Firmware Upgrade Kit

2. Disconnect the WD02 Wet Disintegrator from its power source. Lock out the disconnection so it cannot be inadvertently reconnected while the upgrade is being made.
3. Remove and retain the 4 screws holding the control panel in place. Taking care to avoid damaging the foam seal around the panel, carefully pull the control panel (and cables) out of the front of the Wet Disintegrator and rest it on the protruding top lip of the Bowl Lid on some protective soft material.

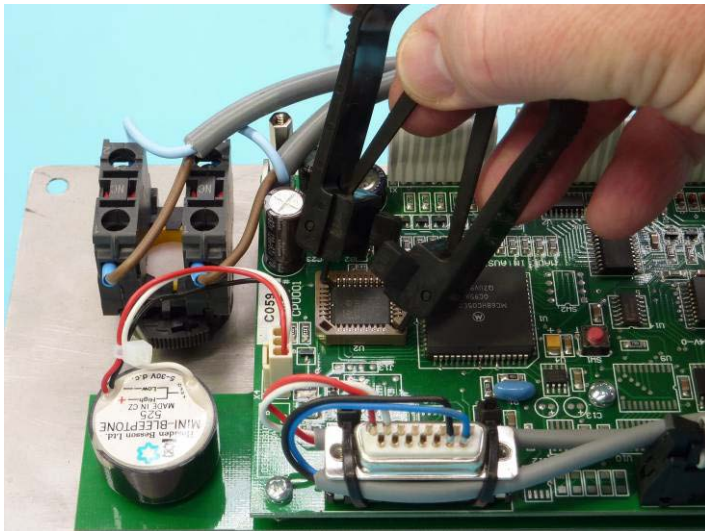


Remove the four screws holding the Control Panel on.



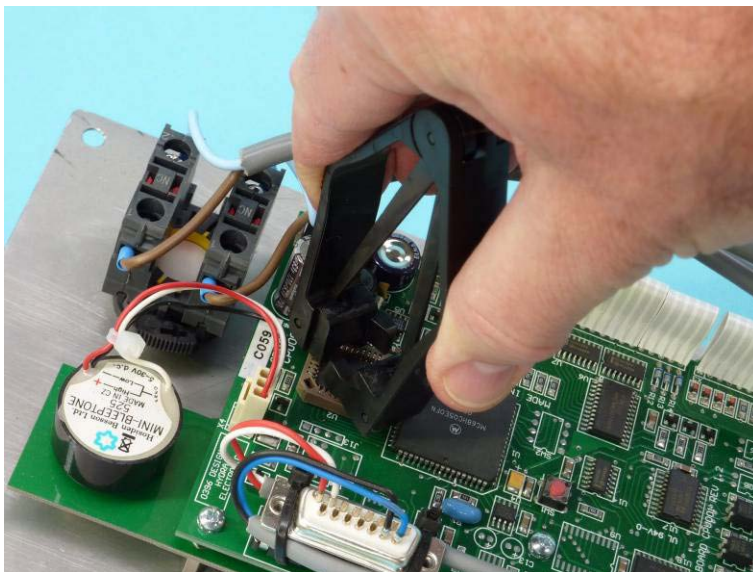
Picture of the Control Panel with the various leads.

4. Holding the IC Remover, locate the two hooked metal prongs in the two slots at the corners of the IC socket as shown. Make sure the prongs are pressed well in and the Remover is held vertically.



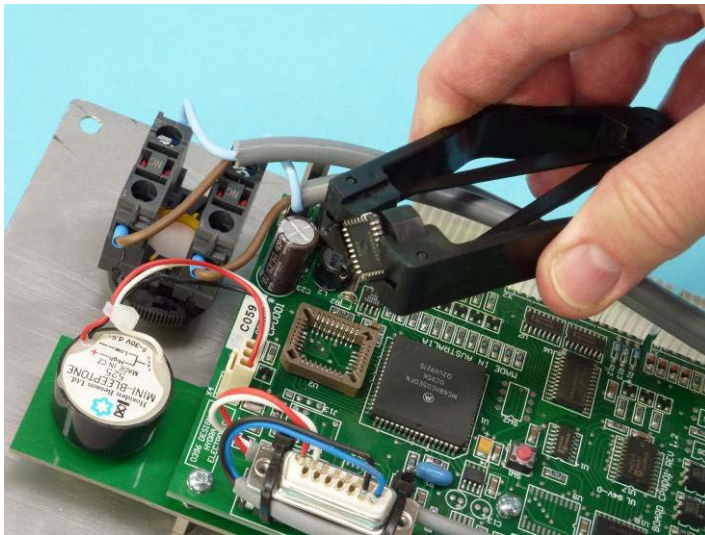
Locate the two metal prongs of the IC Remover in the corners of the IC socket.

5. Squeeze the two sides of the IC Remover firmly and the old software IC will pop out of the socket.



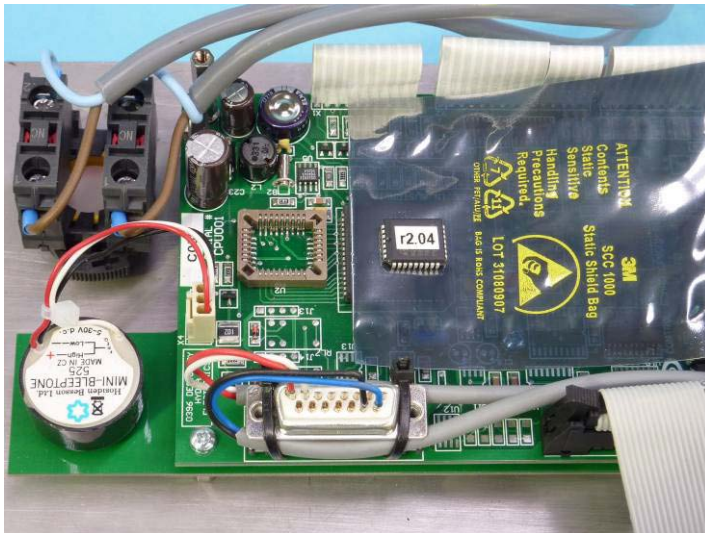
Squeeze the two sides of the IC Remover till the IC pops out.

6. Discard the old integrated circuit.



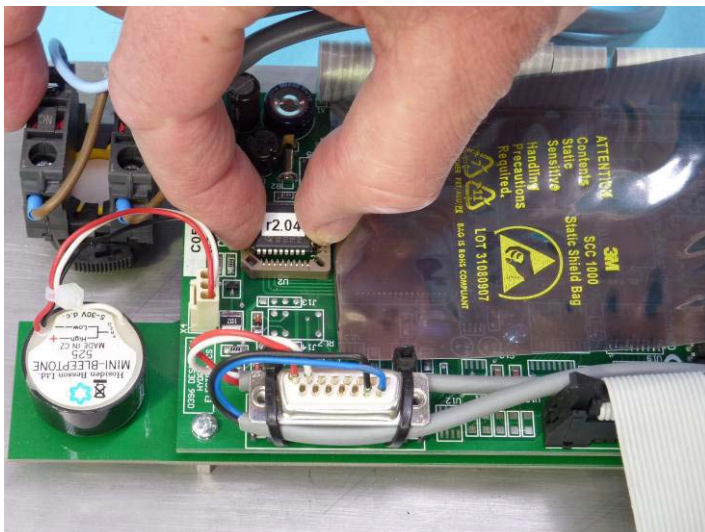
Removed IC.

7. Place the black anti-static bag containing the IC onto the printed circuit board near the socket. Carefully open the bag, remove the IC and lay it on the outside of the bag. Do NOT wear clothing which attracts static electricity or stand on an insulated mat.



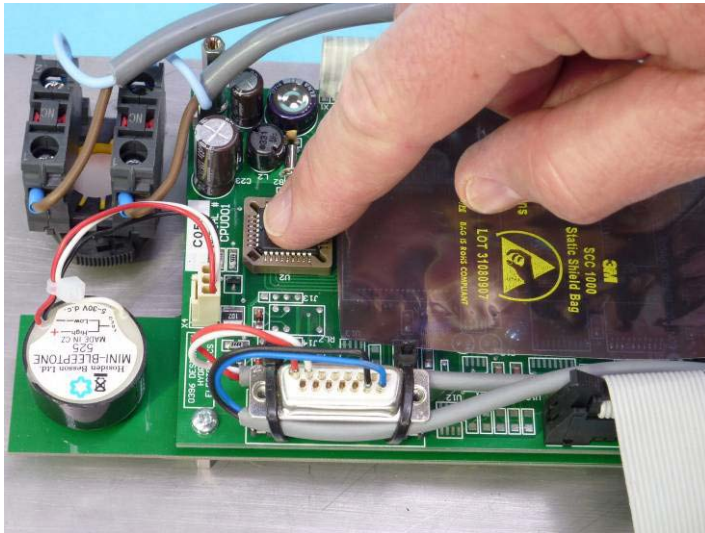
Lay the IC on the anti-static bag near the socket.

8. Note that the IC is "polarised" and can only go into the socket ONE way ie with the corner truncation matching the truncated corner of the IC socket as shown above. Touch the stainless steel front panel to discharge any static electricity, then pick up the new ROM IC carefully and drop it into the socket.



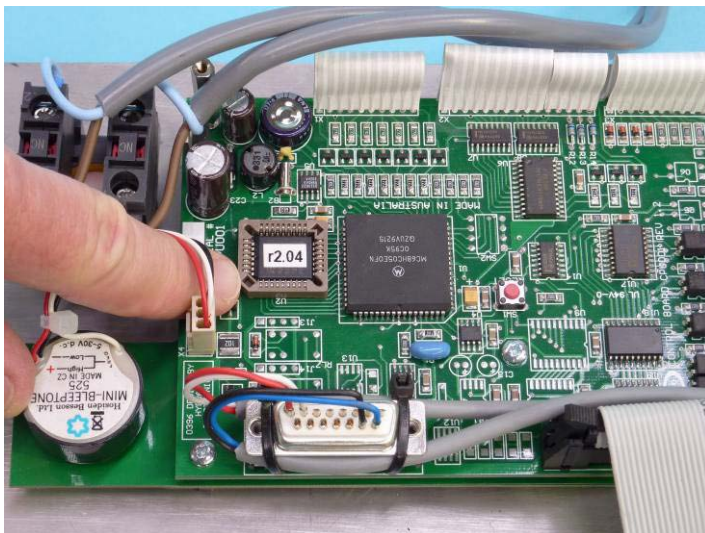
Drop the IC into place.

9. Once the IC is lined up properly, press it squarely and firmly into the socket until it is seated securely.



Press the IC securely into place.

10. Check that the IC finally looks like this photo (NOTE: the version of your software may be different).



Check the orientation of the IC.

11. Whilst being very careful in handling the cables attached to the printed circuit board, replace the front panel into the Wet Disintegrator and screw it back into place.
12. Check that all other parts of the machine have not been disturbed. Restore power. The machine should power up normally with the lamp test, JEFFCO name and the software version number.
13. Test run the machine to ensure that all functions are operating properly.
14. If this is not the case, check again that the IC is properly inserted in the correct orientation.